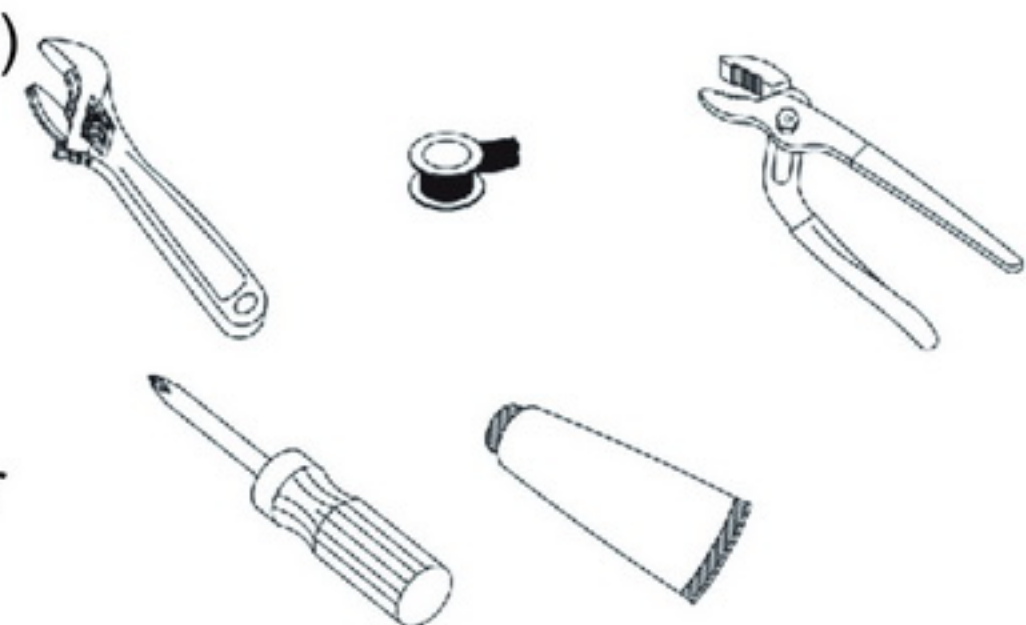


# Installation

## Tools

- Adjustable Wrench(2)
- Teflon Tape
- Groove Joint Plier
- Phillips Screwdriver
- Silicone Sealant



## Maintenance

Your new faucet is designed for years of trouble-free performance. Keep it looking new by cleaning it periodically with a soft cloth. Avoid abrasive cleaners, steel wool and harsh chemicals as these will dull the finish and void your warranty.

## Safety Tips

- If you use soldering for the installation of the faucet, the seats, cartridges and washers will have to be removed before using flame. Otherwise, the warranty will be void on these parts.
- Protect your eyes with safety glass when cutting or soldering water supply lines.
- Cover your drain to avoid losing parts.

## Important Points

Prior to beginning installation, turn off the cold and hot water lines and turn on the old faucet to release built-up pressure. When installing your new faucet, turn the connector nuts finger tight, then use a wrench to anchor the fitting and a second wrench to tighten the nut one additional turn. Connections that are too tight can compromise the integrity of the system. Wrap all threaded connections with a teflon tape. Always wrap in a clockwise direction.

## Need Help

Do you have a question ?  
Just email us to :@derkochline.com

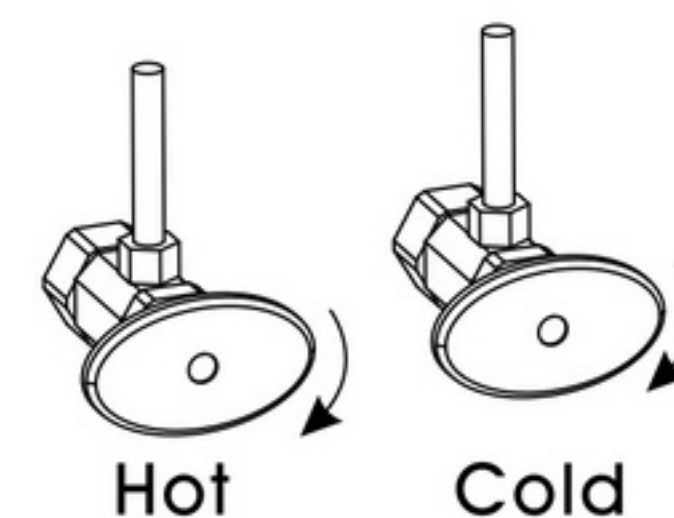
For Model:Jessen Black

## Single Handle Pull-down Kitchen Faucet

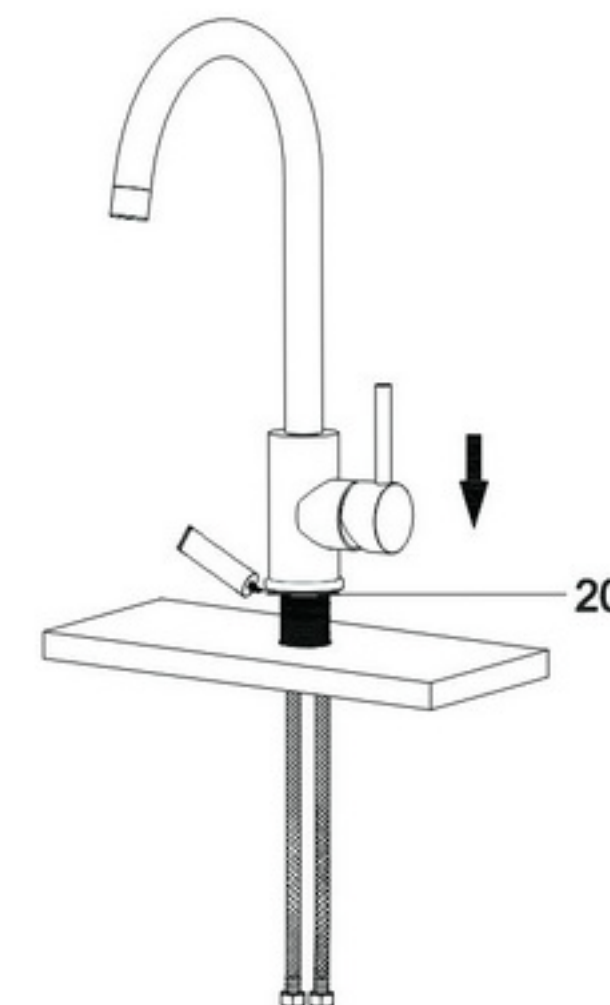


## Preparation/Assembly

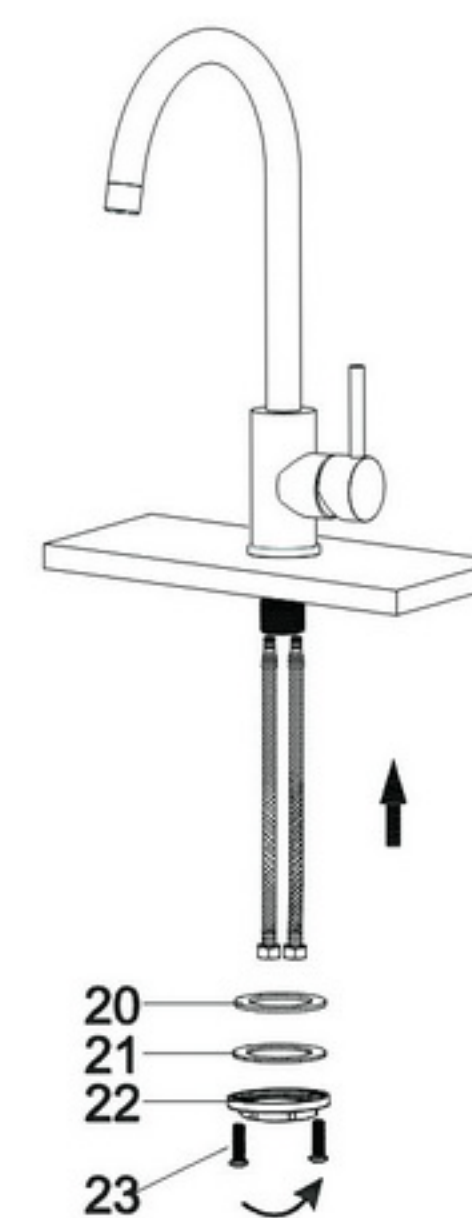
1. Shut off water supply before installation. Remove current faucet and clean and dry the sink surface the new faucet will be installed on.



2. For single hole installation - Place silicone sealant beneath the rubber gasket (#20) and install the faucet through the single faucet hole.



3. Stainless steel gasket (#21) and lock nut (#22) from the bottom. **Please Note:** Please assemble in numerical order. Tighten but do not over tighten. Use a phillips screwdriver to tighten the 2 screws (#23) on the lock nut(#22). See diagram for visual.

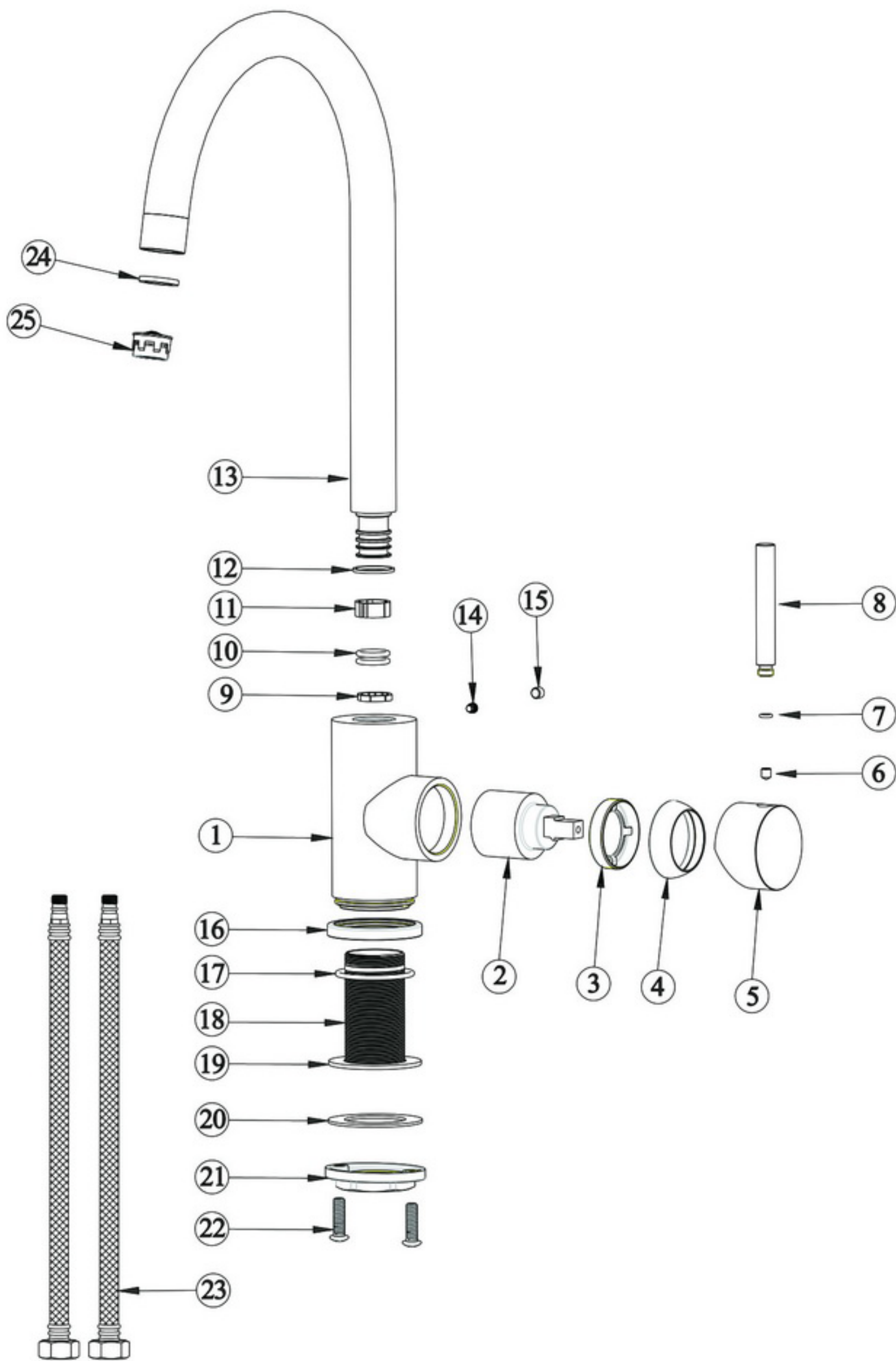
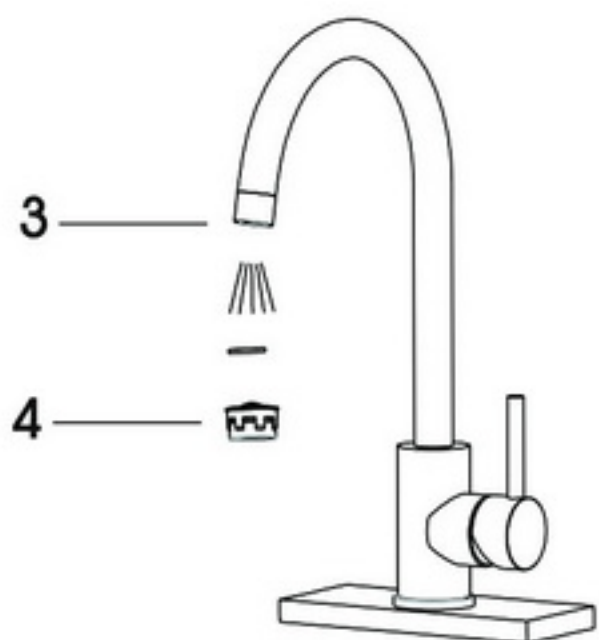
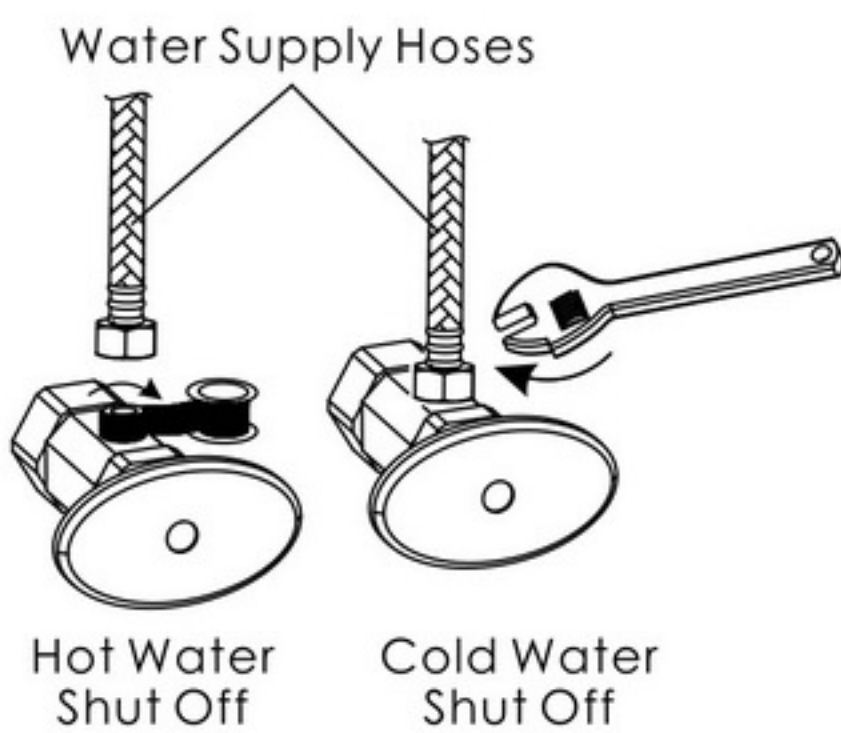


Step 1-3

Do you have a question ?  
Just email us to :@derkochline.com



6. Apply teflon tape onto the threads of the faucet water shut off in a clockwise direction. Tighten the water supply hoses onto the water supply shuf offs. Please be sure to connect the cold water hose to the cold water shut off (Typically on the right) and the hot water supply hose to the hot water shut off (Typically on the left).
7. After installing the faucet, remove spray head (#4) from the hose (#3) and then turn on the hot and cold water shut offs. Check for leaks. If it leaks at the supply line connections at the faucet,please
8. Turn on the faucet for one minute to flush the debris from the faucet. Turn off the faucet and reassemble the pull-down faucet speay head(#4) to hose(#3).



No.	Part Name
1	Body
2	Cartridge
3	Bonnet Nut
4	CaP
5	Handle
6	Allen Screw
7	O-ring
8	Handle Lever
9	Retainer
10	O-ring
11	Retainer
12	Anit-Attrition
13	Spout
14	Allen Screw
15	Plug
16	Base
17	O-ring
18	Threaded Tube
19	Gasket
20	Metal Gasket
21	Lock Nut
22	Set Screw
23	Hot/Cold Water Hose
24	Gasket
25	Aerator

FAUCETS

FOR RESIDENTIAL INSTALLATIONS:Der Koch warrants this product to be free from defects in materials or workmanship for as long as the original consumer purchaser owns this product. Proof of purchase (original sales receipt) from the original consumer purchaser must be made available to Der Koch for all warranty claims. This warranty is non transferable. It does not apply in the event of product damage due to the use of other than genuine Der Koch replacement parts,installation error,abuse,misuse or improper care and maintenance (whether performed by a plumber, contractor, service provider or member of the purchaser's household).The warranty excludes damaged due to aggressive air or water conditions, or harsh or abrasive cleaners and / or materials. ANY PART OR PRODUCT REPAIRED OR ALTERED IN ANY MANNER WITHOUT WRITTEN AUTHORIZATION FROM DER KOCH WILL VOID THE WARRANTY.YOU MUST HAVE THE FAUCET BOX. FOR COMMERCIAL INSTALLATIONS: For all industrial, commercial and business usage the warranty period is five years, from date of purchase and except for duration, all other aforementioned warranty terms apply. For both Residential and Commercial warranties, batteries are not included in the warranty.

Der Koch will provide free of charge,at it's sole option,replacement part(s) or product(or if no longer) available, a comparable product) to replace those which have proven defective in materials or workmanship. The warranty does not cover shipping cost of parts. This warranty does not cover labor charges incurred and / or damage sustained in installation, repair or replacement, nor incidental or consequential damages.