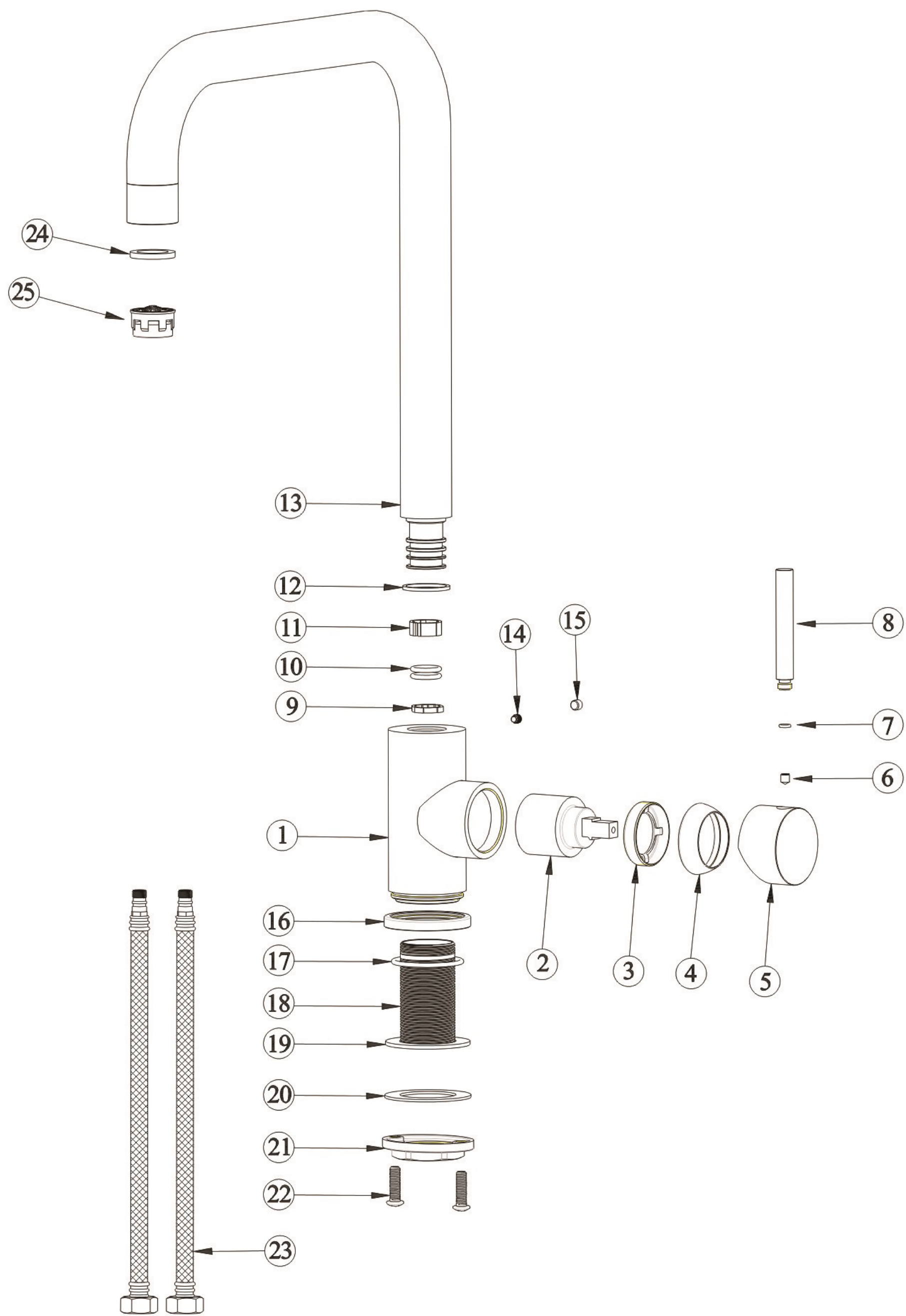
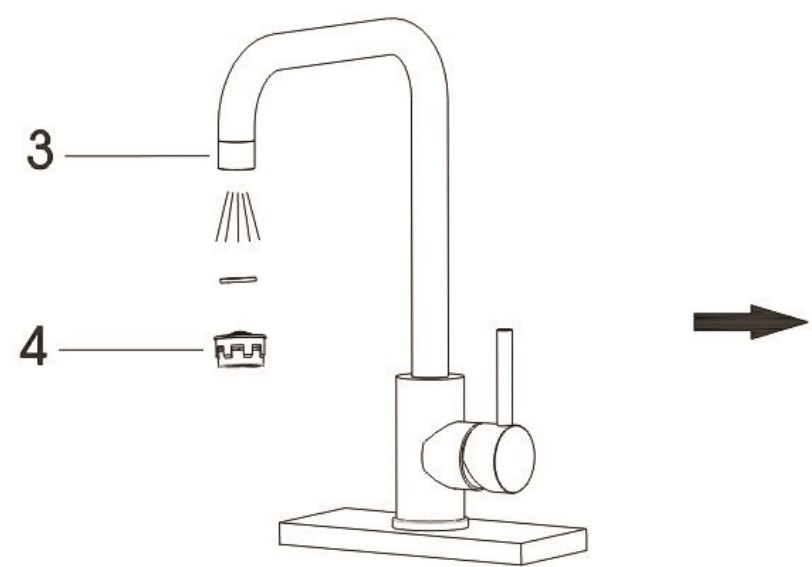
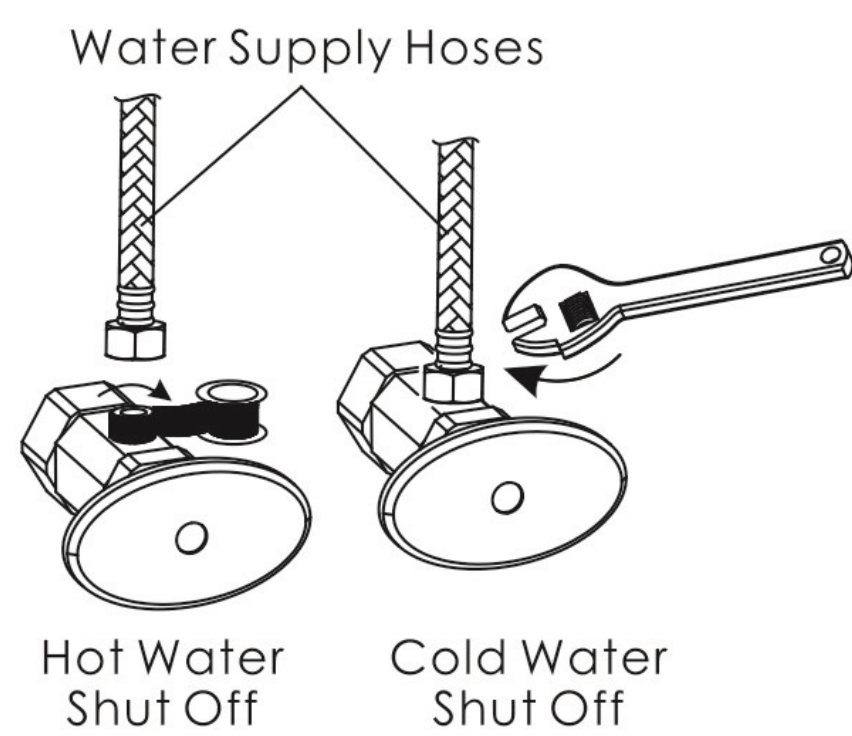


Preparation/Assembly

Parts Diagram / List

6. Apply teflon tape onto the threads of the faucet water shut off in a clockwise direction. Tighten the water supply hoses onto the water supply shut off Please be sure to connect the cold water hose to the cold water shut off (Typically on the right) and the hot water supply hose to the hot water shut off (Typically on the left).
7. After installing the faucet, remove spray head (#4) from the hose (#3) and then turn on the hot and cold water shut off. Check for leaks. If it leaks at the supply line connections at the faucet, please
8. Turn on the faucet for one minute to flush the debris from the faucet. Turn off the faucet and reassemble the pull-down faucet speay head(#4) to hose(#3).



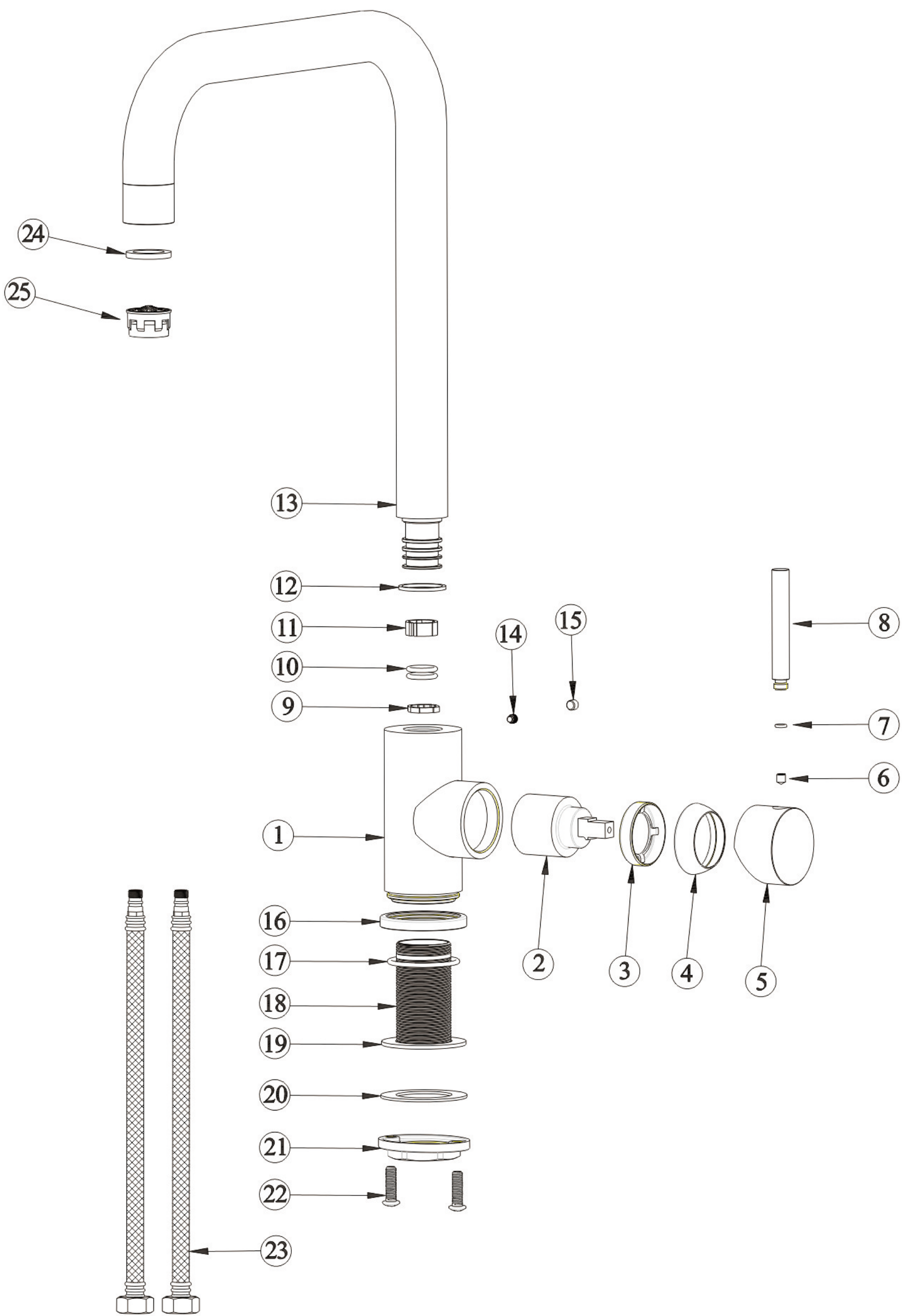
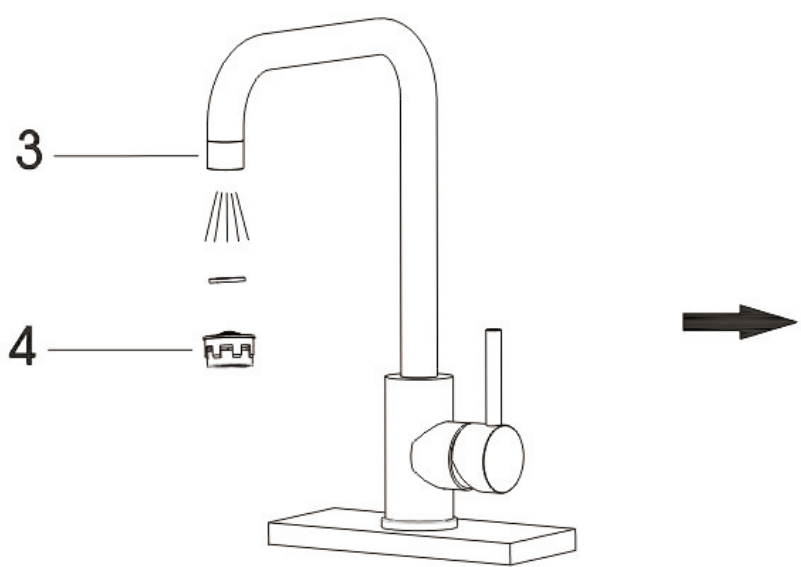
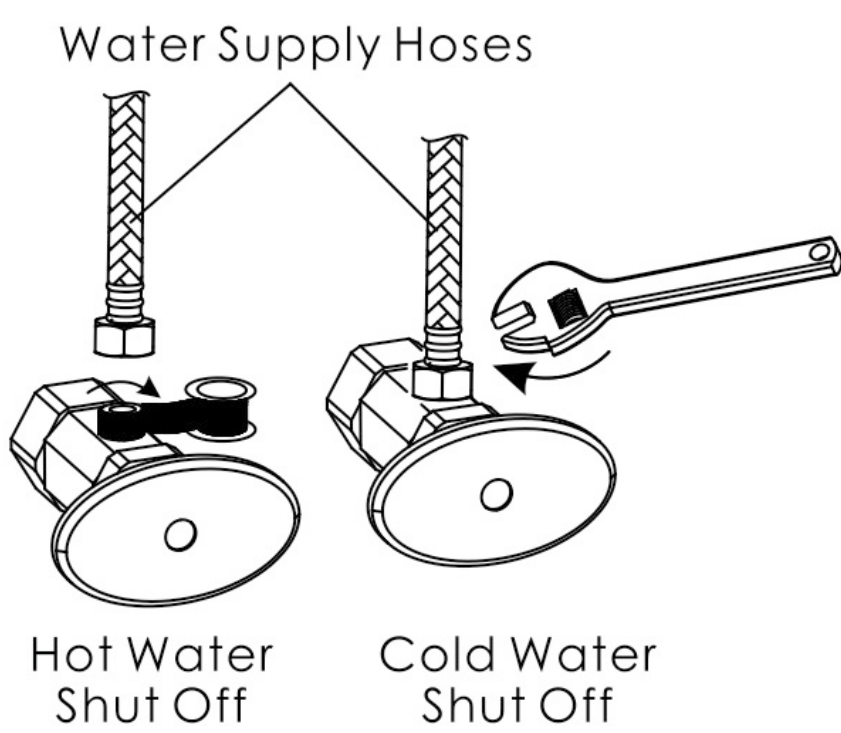
No.	Part Name
1	Body
2	Cartridge
3	Bonnet Nut
4	CaP
5	Handle
6	Allen Screw
7	O-ring
8	Handle Lever
9	Retainer
10	O-ring
11	Retainer
12	Anit-Attrition
13	Spout
14	Allen Screw
15	Plug
16	Base
17	O-ring
18	Threaded Tube
19	Gasket
20	Metal Gasket
21	Lock Nut
22	Set Screw
23	Hot/Cold Water Hose
24	Gasket
25	Aerator

FAUCETS

FOR RESIDENTIAL INSTALLTIONS:Der Koch warrants this product to be free from defects in materials or workmanship for as long as the original consumer purchaser owns this product. Proof of purchase (original sales receipt) from the original consumer purchaser must be made available to Der Koch for all warranty claims. This warranty is non transferable. It does not apply in the event of product damage due to the use of other than genuine Der Koch replacement parts,installtion error,abuse,misuse or improper care and maintenance (whether performed by a plumber, contractor, service provider or member of the purchaser's household).The warranty excludes damaged due to aggressive air or water conditions, or harsh or abrasive cleaners and / or materials. ANY PART OR PRODUCT REPAIRED OR ALTERED IN ANY MANNER WITHOUT WRITEN AUTHORIZATION FROM DER KOCH WIL VOID THE WARRANTY.YOU MUST HAVE THE FAUCET BOX. FOR COMMERCIAL INSTALLATIONS: For all industrial, commercial and business usage the warranty period is five years, from date of purchase and except for duration, all other aforementioned warranty terms apply. For both Residential and Commercial warranties, batteries are not included in the warranty.

Der Koch will provide free of charge,at it's sole option,replacement part(s) or product(or if no longer) available, a comparable product) to replace those which have proven defective in materials or workmanship. The warranty does not cover shipping cost of parts. This warranty does not cover labor charges incurred and / or damage sustained in installation, repair or replacement, nor incidental or consequential damages.

6. Apply teflon tape onto the threads of the faucet water shut off in a clockwise direction. Tighten the water supply hoses onto the water supply shut off. Please be sure to connect the cold water hose to the cold water shut off (Typically on the right) and the hot water supply hose to the hot water shut off (Typically on the left).
7. After installing the faucet, remove spray head (#4) from the hose (#3) and then turn on the hot and cold water shut off. Check for leaks. If it leaks at the supply line connetctions at the faucet, please
8. Turn on the faucet for one minute to flush the debris from the faucet. Turn off the faucet and reassemble the pull-down faucet speay head(#4) to hose(#3).



No.	Part Name
1	Body
2	Cartridge
3	Bonnet Nut
4	CaP
5	Handle
6	Allen Screw
7	O-ring
8	Handle Lever
9	Retainer
10	O-ring
11	Retainer
12	Anit-Attrition
13	Spout
14	Allen Screw
15	Plug
16	Base
17	O-ring
18	Threaded Tube
19	Gasket
20	Metal Gasket
21	Lock Nut
22	Set Screw
23	Hot/Cold Water Hose
24	Gasket
25	Aerator

FAUCETS

FOR RESIDENTIAL INSTALLTIONS:Der Koch warrants this product to be free from defects in materials or workmanship for as long as the original consumer purchaser owns this product. Proof of purchase (original sales receipt) from the original consumer purchaser must be made available to Der Koch for all warranty claims. This warranty is non transferable. It does not apply in the event of product damage due to the use of other than genuine Der Koch replacement parts,installtion error,abuse,misuse or improper care and maintenance (whether performed by a plumber, contractor, service provider or member of the purchaser's household).The warranty excludes damaged due to aggressive air or water conditions, or harsh or abrasive cleaners and / or materials. ANY PART OR PRODUCT REPAIRED OR ALTERED IN ANY MANNER WITHOUT WRITEN AUTHORIZATION FROM DER KOCH WIL VOID THE WARRANTY.YOU MUST HAVE THE FAUCET BOX. FOR COMMERCIAL INSTALLATIONS: For all industrial, commercial and business usage the warranty period is five years, from date of purchase and except for duration, all other aforementioned warranty terms apply. For both Residential and Commercial warranties, batteries are not included in the warranty.

Der Koch will provide free of charge,at it's sole option,replacement part(s) or product(or if no longer) available, a comparable product) to replace those which have proven defective in materials or workmanship. The warranty does not cover shipping cost of parts. This warranty does not cover labor charges incurred and / or damage sustained in installation, repair or replacement, nor incidental or consequential damages.